



PIERMONT  
GRAND

# WELCOME TO PIERMONT GRAND



## THE NEW EXECUTIVE CONDOMINIUM FOR THE NEW PUNGGOL

**Breathtaking views.**

**Modern design.**

**Multifarious lifestyle amenities.**

Designed by experienced property developers City Developments Limited and TID Pte. Ltd., Piermont Grand is everything you want in a luxury executive condominium and more.

Located within Punggol, this is where you will enjoy the best of waterfront living amidst a world of infinite possibilities. Possibilities that will redefine the way you work, live, and play to create the most unforgettable moments to come.

## LUXURY LIVING BY THE WATERFRONT

Built upon the idea of a vantage point elevated high above, Piermont Grand is designed for those looking to experience a new level of luxury while moving forward in life with your loved ones. Through the array of sports, relaxation, and entertainment facilities in each of the four landscape zones, you can certainly enjoy greater heights of living as you embrace the future.



50m Lap Pool

### FOUR CURATED LANDSCAPE ZONES

#### THE CASCADES

With lush greenery and artful sculptures that herald your arrival, this is where you are greeted with a grand welcome.

#### THE WATERFALLS

Bask in luxurious pools fronted by waterfalls and other unique water features as you entertain guests.

#### THE LAKES

Splash around for fabulous family fun at different play pools for the children's play time or a leisurely swim.

#### THE HILLS

Near a rolling lawn adorned with cabanas, you can soak in the quiet moments as you enjoy a relaxing hydrotherapy spa experience.



Cantilevered Gym



Rolling Lawn and Cabanas

## A QUALITY HOME, INSIDE OUT



A stylish sanctuary for restful slumber

Each home within Piermont Grand is inspired for stylish living. Furnished with splendid details like quality fittings from GROHE, branded kitchen appliances from Teka, and the award-winning Haiku fan, your apartment truly brings luxury living to the next level. To suit your aesthetics, you can select either the Earthy Lux or Cool Breeze colour scheme as the choice for your finishes. For selected units, a walk-in wardrobe and a kitchen island are included through thoughtful space planning.



Luxurious bathroom with quality fittings



Efficient living room layout for family bonding

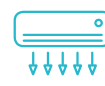
## SIMPLE LIVING STARTS WITH A SMART HOME



Smart Home Gateway with Pan & Tilt Camera



Smart Digital Lockset



Smart Air Conditioner Control



Smart Voice Assistant



Smart Door Sensor



Smart Lighting Control

The unit will be supplied and installed with the following items ("Wireless SMART Home System"): (i) 1 smart home gateway with built-in IP camera, (ii) 1 smart voice assistant, (iii) 1 digital lockset, (iv) 1 main door sensor, (v) 1 lighting control, and (vi) 2 air conditioner controls. The make, model, brand, design and technology of the Wireless SMART Home System to be supplied and installed in the actual unit may differ from the above illustration and are subject to change. Terms and conditions apply. Buyers shall liaise with the smart home vendor instead of the developer to make all arrangements for the set up and configuration of, and for any queries, defects, maintenance and/or upgrade issues with the Wireless SMART Home System at buyers' own costs. Items/devices which are not listed above are not included in Wireless SMART Home System and may be purchased from the smart home vendor directly and installed at buyers' own costs after the handover of the unit.

## PUNGGOL DIGITAL DISTRICT – THE SILICON VALLEY OF SINGAPORE

### Exciting possibilities in the future

Imagine your workplace being a mere stone's throw from home or getting upgraded to join a new future-ready workforce.

As part of Singapore's Smart Nation push, the upcoming Punggol Digital District is now being developed within the wider region with facilities and amenities that include the following:

- Digitally-focused companies
- JTC's innovation-led business parks
- The new campus for Singapore Institute of Technology
- The upcoming Punggol Coast MRT Station on the North East Line extension
- Market Village offering new retail and dining options

And with Piermont Grand near the heart of it all, your home is where your journey into the future begins.



Every reasonable care has been taken in the preparation of the location map. The map is printed as at June 2019. For information on the permissible land use and density of sites around the housing project, the intending Purchaser may refer to the Master Plan available from the website of the Urban Redevelopment Authority at [www.ura.gov.sg](http://www.ura.gov.sg)

# SITE PLAN



3-min walk to Sumang LRT Station  
10-min walk to Punggol MRT Station

# SCHEMATIC DIAGRAM

## LEGEND

- 3-Bedroom
- 3-Bedroom Superior
- 3-Bedroom Deluxe
- 3-Bedroom Premium
- 4-Bedroom Premium
- 5-Bedroom Premium

**Block 22** Sumang Walk Singapore 828677

FLOOR	UNIT	1	2	3	4
10	B2-PH	C2-PH	C2-PH	C2-PH	A4e-PH
9	B2	C2	C2	C2	A4e
8	B2	C2	C2	C2	A4e
7	B2	C2	C2	C2	A4e
6	B2	C2	C2	C2	A4e
5	B2	C2	C2	C2	A4e
4	B2	C2	C2	C2	A4e
3	B2	C2	C2	C2	A4e
2	B2	C2	C2	C2	A4e
1		C2-P2	C2-P2		

**Block 24** Sumang Walk Singapore 828678

FLOOR	UNIT	5	6	7	8
17	B3-PH	B5-PH	A4f-PH	B2-PH	
16	B3	B5	A4f	B2	
15	B3	B5	A4f	B2	
14	B3	B5	A4f	B2	
13	B3	B5	A4f	B2	
12	B3	B5	A4f	B2	
11	B3	B5	A4f	B2	
10	B3	B5	A4f	B2	
9	B3	B5	A4f	B2	
8	B3	B5	A4f	B2	
7	B3	B5	A4f	B2	
6	B3	B5	A4f	B2	
5	B3	B5	A4f	B2	
4	B3	B5	A4f	B2	
3	B3	B5	A4f	B2	
2	A4g-P	B5	A4f	B2-P1	
1		B5-P	A4f-P		

**Block 26** Sumang Walk Singapore 828618

FLOOR	UNIT	9	10	11	12
17	B3-PH	C2-PH	B4-PH	B3-PH	
16	B3	C2	B4	B3	
15	B3	C2	B4	B3	
14	B3	C2	B4	B3	
13	B3	C2	B4	B3	
12	B3	C2	B4	B3	
11	B3	C2	B4	B3	
10	B3	C2	B4	B3	
9	B3	C2	B4	B3	
8	B3	C2	B4	B3	
7	B3	C2	B4	B3	
6	B3	C2	B4	B3	
5	B3	C2	B4	B3	
4	B3	C2	B4	B3	
3	B3	C2	B4	B3	
2	A4g-P	C2	B4	B3-P	
1		C2-P3	B4-P1		

**Block 28** Sumang Walk Singapore 828619

FLOOR	UNIT	13	14	15	16
17	B2-PH	B4-PH	C2-PH	C2-PH	
16	B2	B4	C2	C2	
15	B2	B4	C2	C2	
14	B2	B4	C2	C2	
13	B2	B4	C2	C2	
12	B2	B4	C2	C2	
11	B2	B4	C2	C2	
10	B2	B4	C2	C2	
9	B2	B4	C2	C2	
8	B2	B4	C2	C2	
7	B2	B4	C2	C2	
6	B2	B4	C2	C2	
5	B2	B4	C2	C2	
4	B2	B4	C2	C2	
3	B2	B4	C2	C2	
2	A4h-P	B4	C2	C2-P1	
1		B4-P2	C2-P3		

**Block 30** Sumang Walk Singapore 828620

FLOOR	UNIT	17	18	19	20
10	B4-PH	B2-PH	B4-PH	B2-PH	
9	B4	B2	B4	B2	
8	B4	B2	B4	B2	
7	B4	B2	B4	B2	
6	B4	B2	B4	B2	
5	B4	B2	B4	B2	
4	B4	B2	B4	B2	
3	B4	B2	B4	B2	
2	B4	B2	B4	B2	
1		B2-P2	B4-P1		

**Block 32** Sumang Walk Singapore 828621

FLOOR	UNIT	21	22	23	24
18	A1a-PH	A3a-PH	B1-PH	A1b-PH	
17	A1a	A3a	B1	A1b	
16	A1a	A3a	B1	A1b	
15	A1a	A3a	B1	A1b	
14	A1a	A3a	B1	A1b	
13	A1a	A3a	B1	A1b	
12	A1a	A3a	B1	A1b	
11	A1a	A3a	B1	A1b	
10	A1a	A3a	B1	A1b	
9	A1a	A3a	B1	A1b	
8	A1a	A3a	B1	A1b	
7	A1a	A3a	B1	A1b	
6	A1a	A3a	B1	A1b	
5	A1a	A3a	B1	A1b	
4	A1a	A3a	B1	A1b	
3	A1a	A3a	B1	A1b	
2		A1d-P	B1-P		

**Block 34** Sumang Walk Singapore 828622

FLOOR	UNIT	25	26	27	28
18	A1a-PH	C1-PH	A3a-PH	A1a-PH	
17	A1a	C1	A3a	A1a	
16	A1a	C1	A3a	A1a	
15	A1a	C1	A3a	A1a	
14	A1a	C1	A3a	A1a	
13	A1a	C1	A3a	A1a	
12	A1a	C1	A3a	A1a	
11	A1a	C1	A3a	A1a	
10	A1a	C1	A3a	A1a	
9	A1a	C1	A3a	A1a	
8	A1a	C1	A3a	A1a	
7	A1a	C1	A3a	A1a	
6	A1a	C1	A3a	A1a	
5	A1a	C1	A3a	A1a	
4	A1a	C1	A3a	A1a	
3	A1a	C1	A3a	A1a	
2		C1-P	A1d-P		

**Block 36** Sumang Walk Singapore 828623

FLOOR	UNIT	29	30	31	32
17	A3b-PH	A3a-PH	A4d-PH	A4a-PH	
16	A3b	A3a	A4d	A4a	
15	A3b	A3a	A4d	A4a	
14	A3b	A3a	A4d	A4a	
13	A3b	A3a	A4d	A4a	
12	A3b	A3a	A4d	A4a	
11	A3b	A3a	A4d	A4a	
10	A3b	A3a	A4d	A4a	
9	A3b	A3a	A4d	A4a	
8	A3b	A3a	A4d	A4a	
7	A3b	A3a	A4d	A4a	
6	A3b	A3a	A4d	A4a	
5	A3b	A3a	A4d	A4a	
4	A3b	A3a	A4d	A4a	
3	A3b	A3a	A4d	A4a	
2	A1e-P	A1d-P	A4d-P	A4a-P	

**Block 38** Sumang Walk Singapore 828624

FLOOR	UNIT	33	34	35	36
17	A1a-PH	A3a-PH	A4b-PH	A1a-PH	
16	A1a	A3a	A4b	A1a	
15	A1a	A3a	A4b	A1a	
14	A1a	A3a	A4b	A1a	
13	A1a	A3a	A4b	A1a	
12	A1a	A3a	A4b	A1a	
11	A1a	A3a	A4b	A1a	
10	A1a	A3a	A4b	A1a	
9	A1a	A3a	A4b	A1a	
8	A1a	A3a	A4b	A1a	
7	A1a	A3a	A4b	A1a	
6	A1a	A3a	A4b	A1a	
5	A1a	A3a	A4b	A1a	
4	A1a	A3a	A4b	A1a	
3	A1a	A3a	A4b	A1a	
2	A1a-P	A1d-P	A4b-P	A1a-P	

**Block 40** Sumang Walk Singapore 828625

FLOOR	UNIT	37	38	39	40
17	A1a-PH	A4d-PH	A4c-PH	A1a-PH	
16	A1a	A4d	A4c	A1a	
15	A1a	A4d	A4c	A1a	
14	A1a	A4d	A4c	A1a	
13	A1a	A4d	A4c	A1a	
12	A1a	A4d	A4c	A1a	
11	A1a	A4d	A4c	A1a	
10	A1a	A4d	A4c	A1a	
9	A1a	A4d	A4c	A1a	
8	A1a	A4d	A4c	A1a	
7	A1a	A4d	A4c	A1a	
6	A1a	A4d	A4c	A1a	
5	A1a	A4d	A4c	A1a	
4	A1a	A4d	A4c	A1a	
3	A1a	A4d	A4c	A1a	
2	A1a-P	A4d-P	A1f-P	A1a-P	

**Block 42** Sumang Walk Singapore 828626

FLOOR	UNIT	41	42	43	44	45	46
17	A2c-PH	A2c-PH	A1c-PH	A2a-PH	A2a-PH	A2b-PH	
16	A2c	A2c	A1c	A2a	A2a	A2b	
15	A2c	A2c	A1c	A2a	A2a	A2b	
14	A2c	A2c	A1c	A2a	A2a	A2b	
13	A2c	A2c	A1c	A2a	A2a	A2b	
12	A2c	A2c	A1c	A2a	A2a	A2b	
11	A2c	A2c	A1c	A2a	A2a	A2b	
10	A2c	A2c	A1c	A2a	A2a	A2b	
9	A2c	A2c	A1c	A2a	A2a	A2b	
8	A2c	A2c	A1c	A2a	A2a	A2b	
7	A2c	A2c	A1c	A2a	A2a	A2b	
6	A2c	A2c	A1c	A2a	A2a	A2b	
5	A2c	A2c	A1c	A2a	A2a	A2b	
4	A2c	A2c	A1c	A2a	A2a	A2b	
3	A2c	A2c	A1c	A2a	A2a	A2b	
2	A2c-P	A2c-P	A1c-P			A2b-P	

**Block 44** Sumang Walk Singapore 828627

FLOOR	UNIT	47	48	49	50
17	A1a-PH	A2d-PH	A2d-PH	A1a-PH	
16	A1a	A2d	A2d	A1a	
15	A1a	A2d	A2d	A1a	
14	A1a	A2d	A2d	A1a	
13	A1a	A2d	A2d	A1a	
12	A1a	A2d	A2d	A1a	
11	A1a	A2d	A2d	A1a	
10	A1a	A2d	A2d	A1a	
9	A1a	A2d	A2d	A1a	
8	A1a	A2d	A2d	A1a	
7	A1a	A2d	A2d	A1a	
6	A1a	A2d	A2d	A1a	
5	A1a	A2d	A2d	A1a	
4	A1a	A2d	A2d	A1a	
3	A1a	A2d	A2d	A1a	
2	A1a-P	A1g-P	A2d-P	A1a-P	

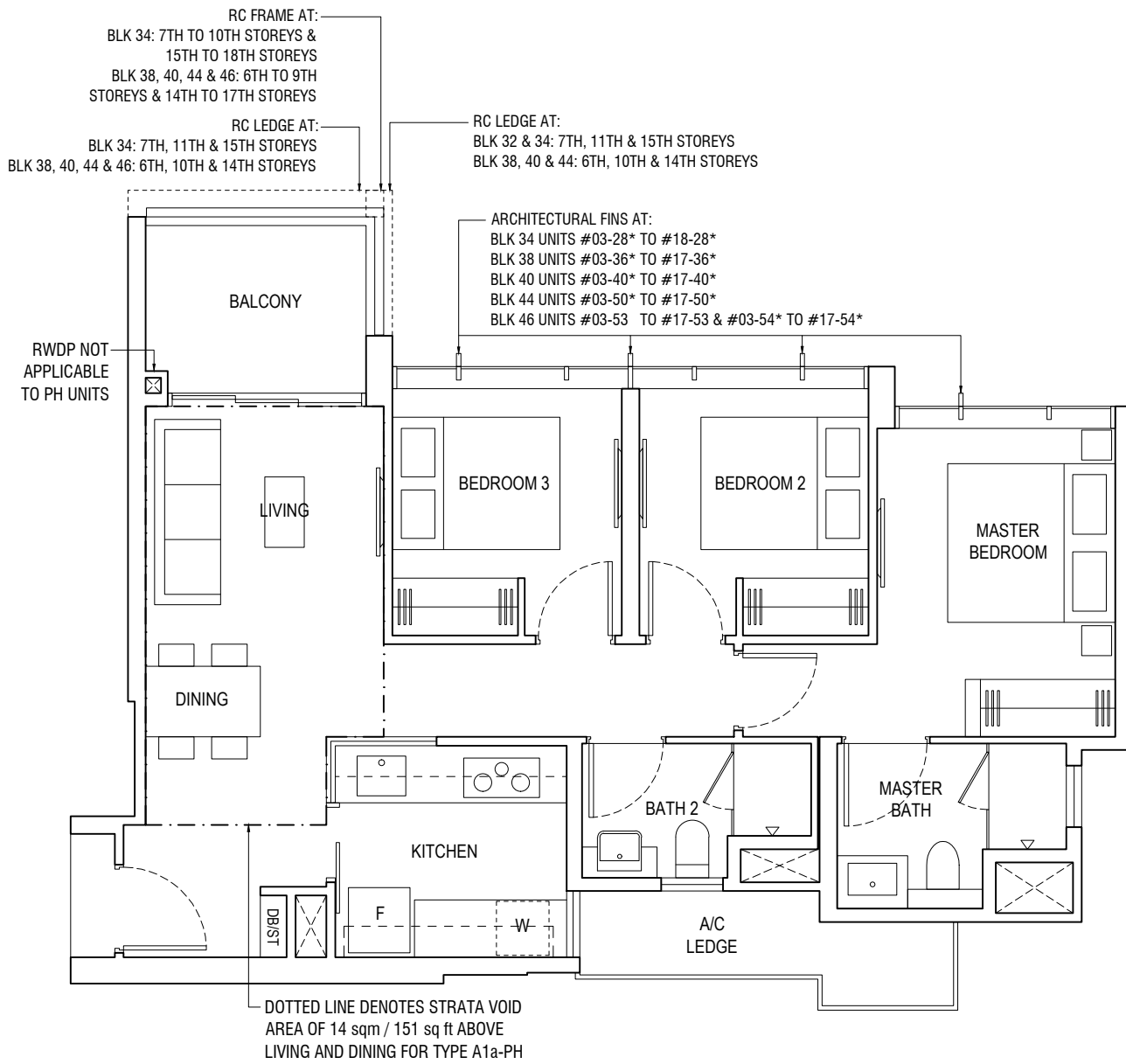
**Block 46** Sumang Walk Singapore 828628

FLOOR	UNIT	51	52	53	54
17	A1b-PH	A1b-PH	A1a-PH	A1a-PH	
16	A1b	A1b	A1a	A1a	
15	A1b	A1b	A1a	A1a	
14	A1b	A1b	A1a	A1a	
13	A1b	A1b	A1a	A1a	
12	A1b	A1b	A1a	A1a	
11	A1b	A1b	A1a	A1a	
10	A1b				

# Type A1a

78 sqm / 840 sq ft

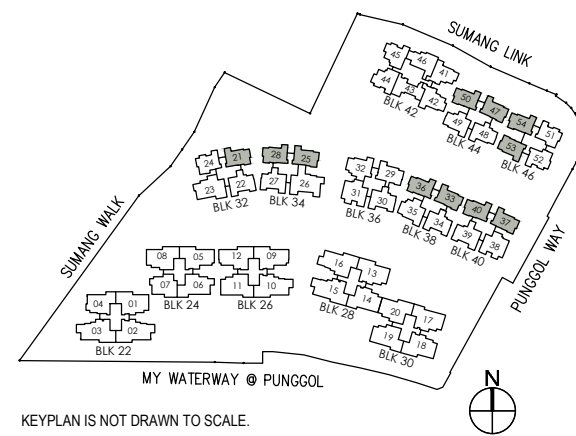
- BLK 32: #03-21 to #17-21
- BLK 34: #03-25 to #17-25, #03-28\* to #17-28\*
- BLK 38: #03-33 to #16-33, #03-36\* to #16-36\*
- BLK 40: #03-37 to #16-37, #03-40\* to #16-40\*
- BLK 44: #03-47 to #16-47, #03-50\* to #16-50\*
- BLK 46: #03-53 to #16-53, #03-54\* to #16-54\*



\*Mirror Image



Area includes air-con (A/C) ledge, balcony and strata void where applicable. Some units are mirror images of the apartment plans shown in the brochure. Please refer to the key plan for orientation. The plans are subject to change as may be approved by relevant authorities. All floor plans are approximate measurements only and are subject to government re-survey. The balcony shall not be enclosed unless with the approved balcony screen. For an illustration of the approved balcony screen, please refer to the diagram annexed hereto as "Annexure A".



# Type A1a-PH

92 sqm / 990 sq ft

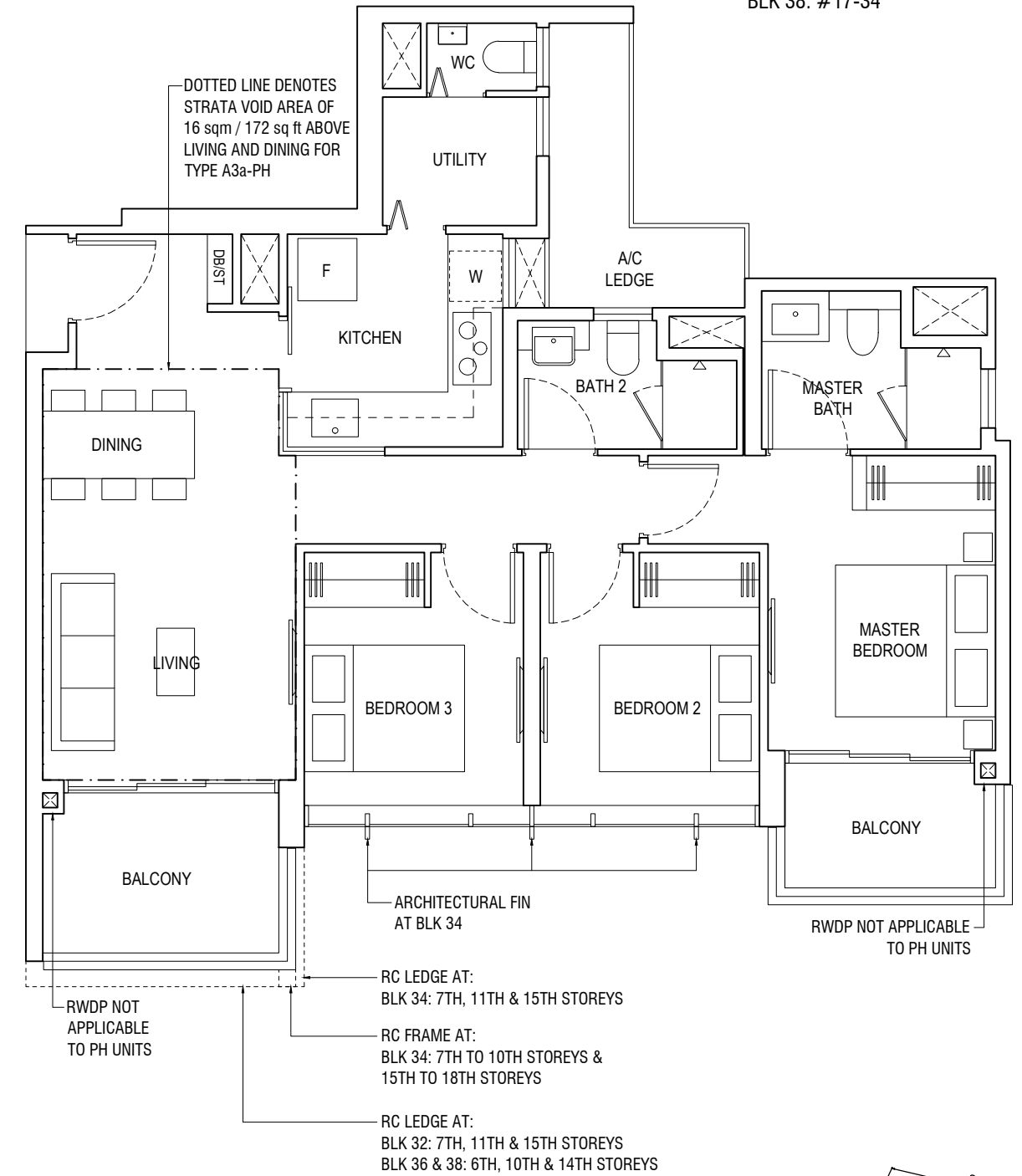
INCLUDING STRATA VOID OF 14 sqm / 151 sq ft ABOVE LIVING & DINING. APPROXIMATE 4.5m FLOOR TO CEILING HEIGHT AT LIVING & DINING

- BLK 32: #18-21
- BLK 34: #18-25, #18-28\*
- BLK 38: #17-33, #17-36\*
- BLK 40: #17-37, #17-40\*
- BLK 44: #17-47, #17-50\*
- BLK 46: #17-53, #17-54\*

# Type A3a

92 sqm / 990 sq ft

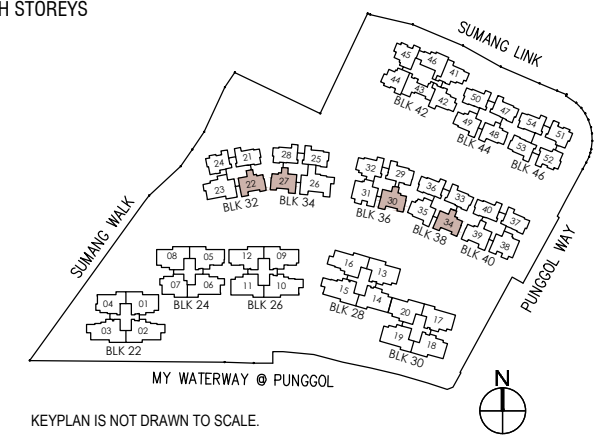
- BLK 32: #03-22 to #17-22
- BLK 34: #03-27\* to #17-27\*
- BLK 36: #03-30 to #16-30
- BLK 38: #03-34 to #16-34



\*Mirror Image



Area includes air-con (A/C) ledge, balcony and strata void where applicable. Some units are mirror images of the apartment plans shown in the brochure. Please refer to the key plan for orientation. The plans are subject to change as may be approved by relevant authorities. All floor plans are approximate measurements only and are subject to government re-survey. The balcony shall not be enclosed unless with the approved balcony screen. For an illustration of the approved balcony screen, please refer to the diagram annexed hereto as "Annexure A".



# Type A3a-PH

108 sqm / 1163 sq ft

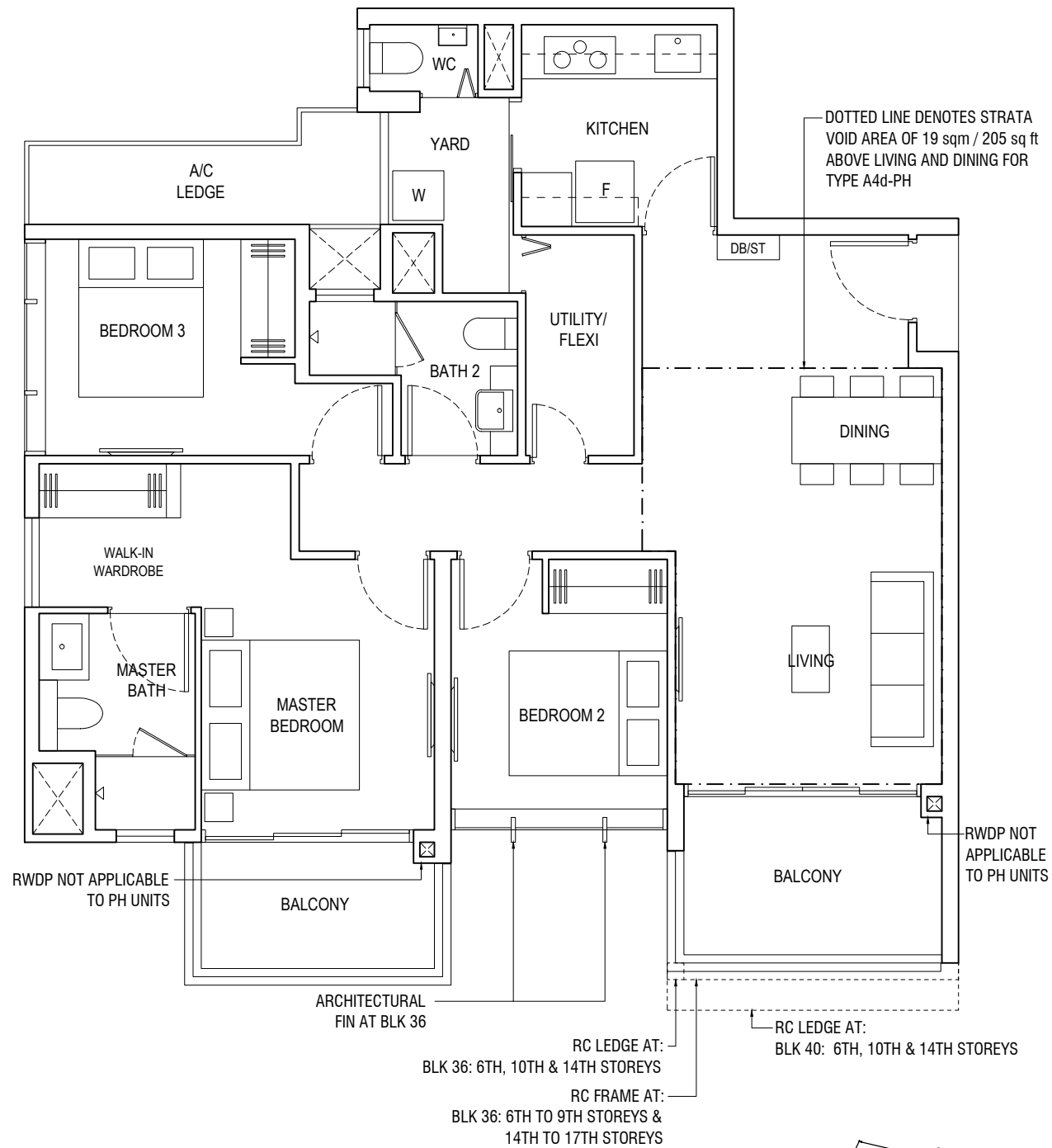
INCLUDING STRATA VOID OF 16 sqm / 172 sq ft ABOVE LIVING & DINING. APPROXIMATE 4.5m FLOOR TO CEILING HEIGHT AT LIVING & DINING

- BLK 32: #18-22
- BLK 34: #18-27\*
- BLK 36: #17-30
- BLK 38: #17-34

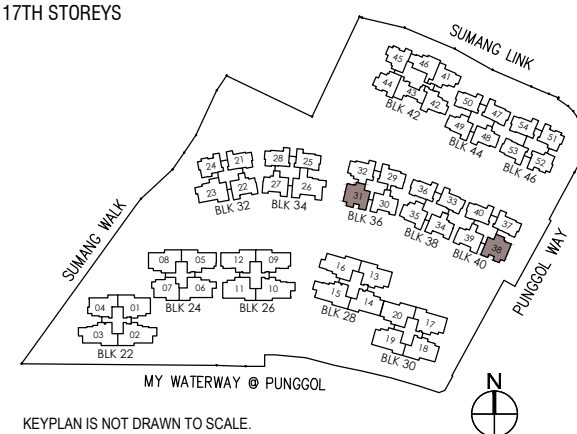
## Type A4d

105 sqm / 1130 sq ft

BLK 36: #03-31 to #16-31  
BLK 40: #03-38\* to #16-38\*



\*Mirror Image



## Type A4d-PH

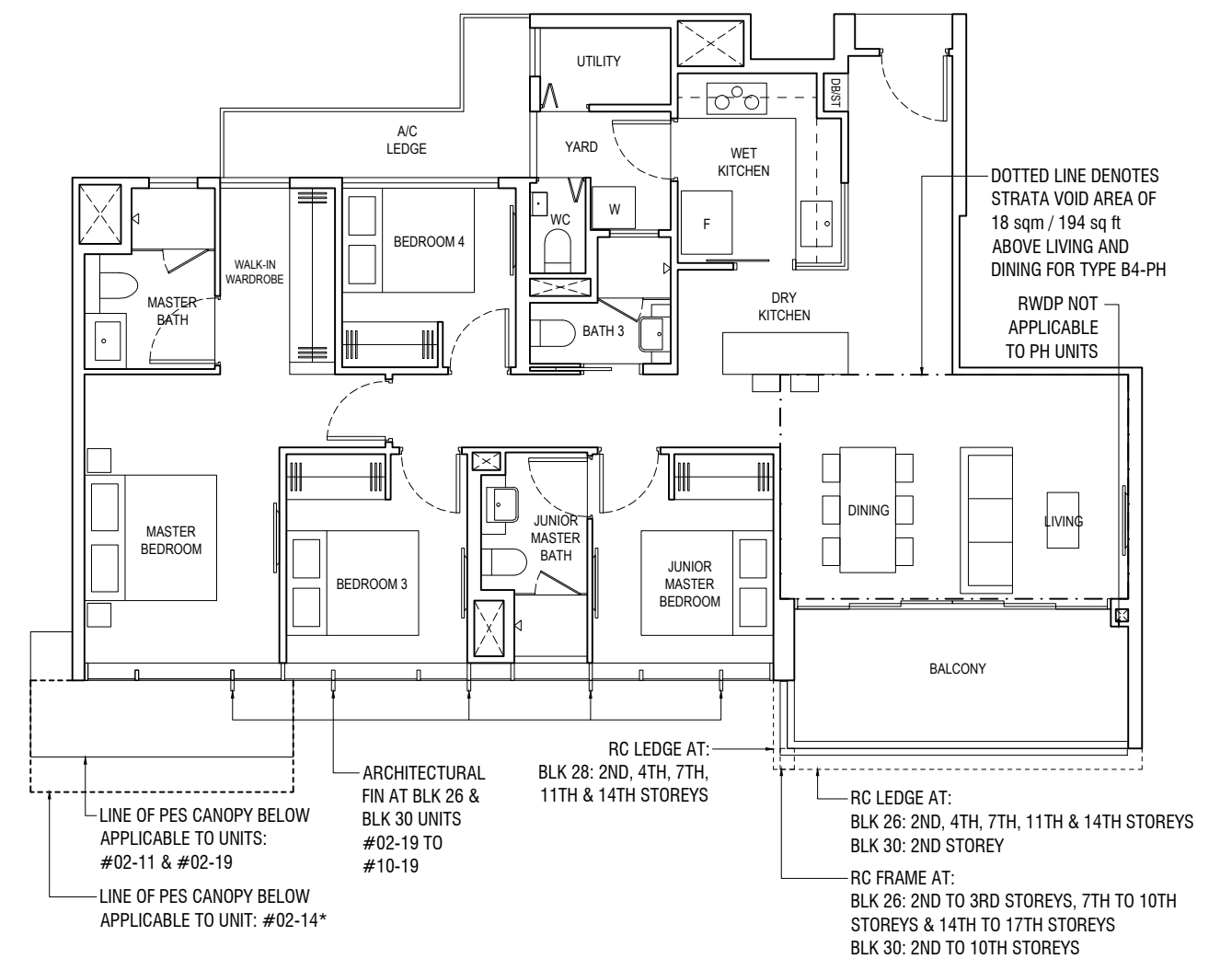
124 sqm / 1335 sq ft  
INCLUDING STRATA VOID OF 19 sqm / 205 sq ft ABOVE LIVING & DINING. APPROXIMATE 4.5m FLOOR TO CEILING HEIGHT AT LIVING & DINING

BLK 36: #17-31  
BLK 40: #17-38\*

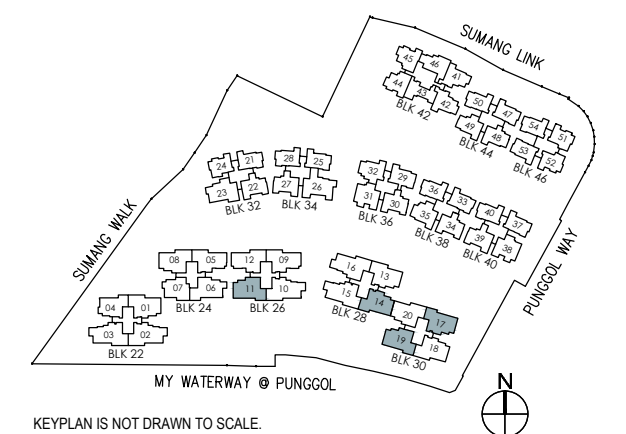
## Type B4

124 sqm / 1335 sq ft

BLK 26: #02-11 to #16-11  
BLK 28: #02-14\* to #16-14\*  
BLK 30: #02-17 to #09-17, #02-19 to #09-19



\*Mirror Image



Area includes air-con (A/C) ledge, balcony and strata void where applicable. Some units are mirror images of the apartment plans shown in the brochure. Please refer to the key plan for orientation. The plans are subject to change as may be approved by relevant authorities. All floor plans are approximate measurements only and are subject to government re-survey. The balcony shall not be enclosed unless with the approved balcony screen. For an illustration of the approved balcony screen, please refer to the diagram annexed hereto as "Annexure A".

Area includes air-con (A/C) ledge, balcony and strata void where applicable. Some units are mirror images of the apartment plans shown in the brochure. Please refer to the key plan for orientation. The plans are subject to change as may be approved by relevant authorities. All floor plans are approximate measurements only and are subject to government re-survey. The balcony shall not be enclosed unless with the approved balcony screen. For an illustration of the approved balcony screen, please refer to the diagram annexed hereto as "Annexure A".